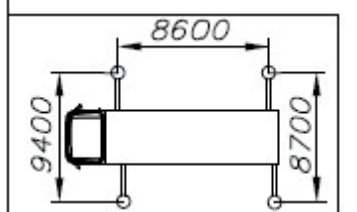
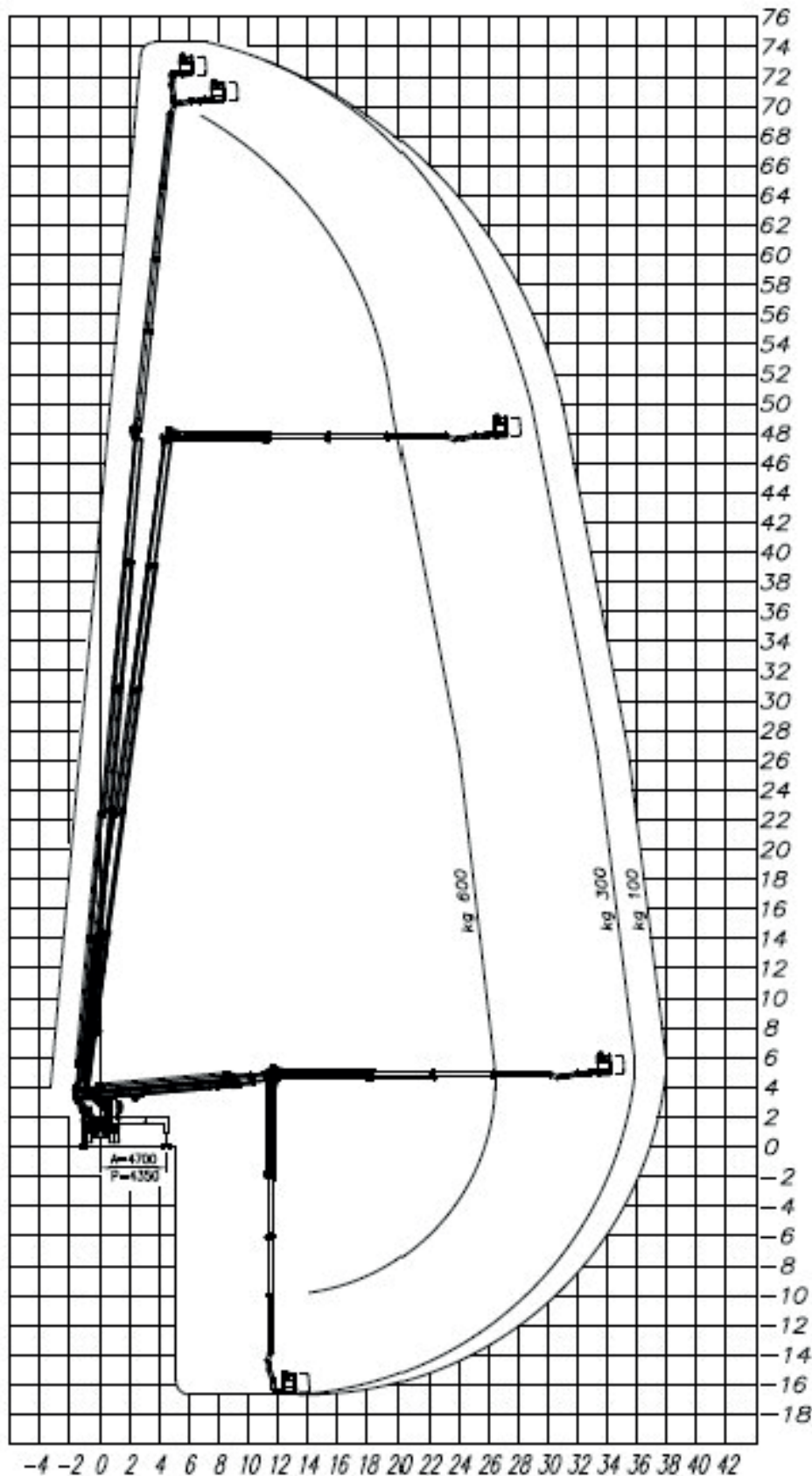




# SOCAGE 75TJJ



# AREA DI LAVORO TRAVI COMPLETAMENTE ESTESE



ALTEZZA MAX

74,50 m



ALTEZZA CESTO

72,50 m



SBRACCIO MAX

40,00 m



PORTATA CESTO

600 kg



ROTAZIONE TORRETTA

700°



CESTO

230/360x90x110 cm



CESTO

Alluminio



ROTAZIONE CESTO

360°



STABILIZZATORI

HE+HE



COMANDI

Elettrici



GVW

32 ton



ARGANO

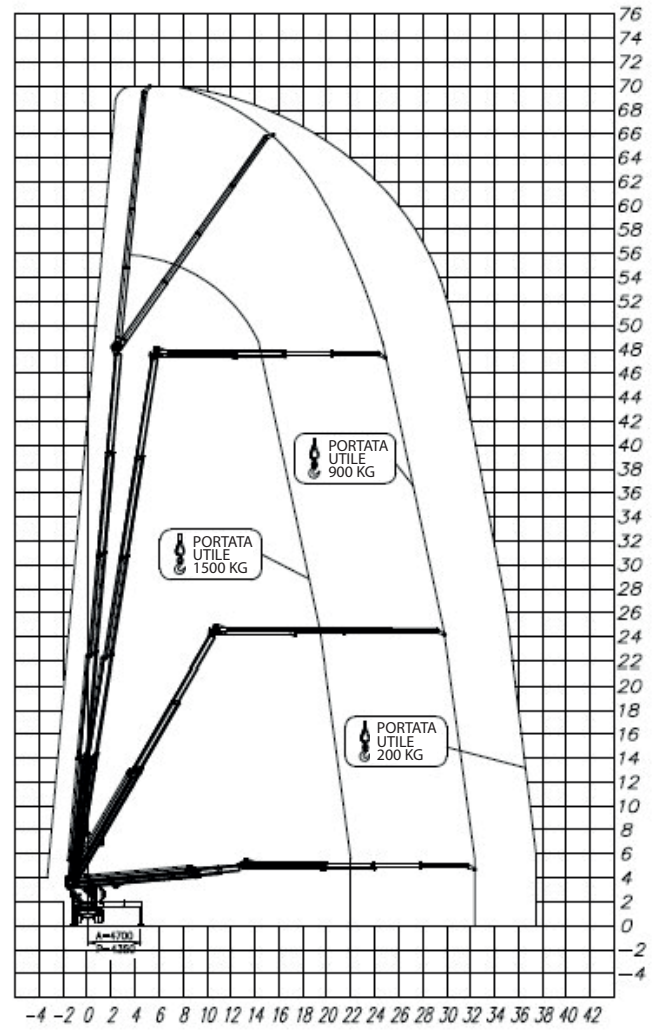
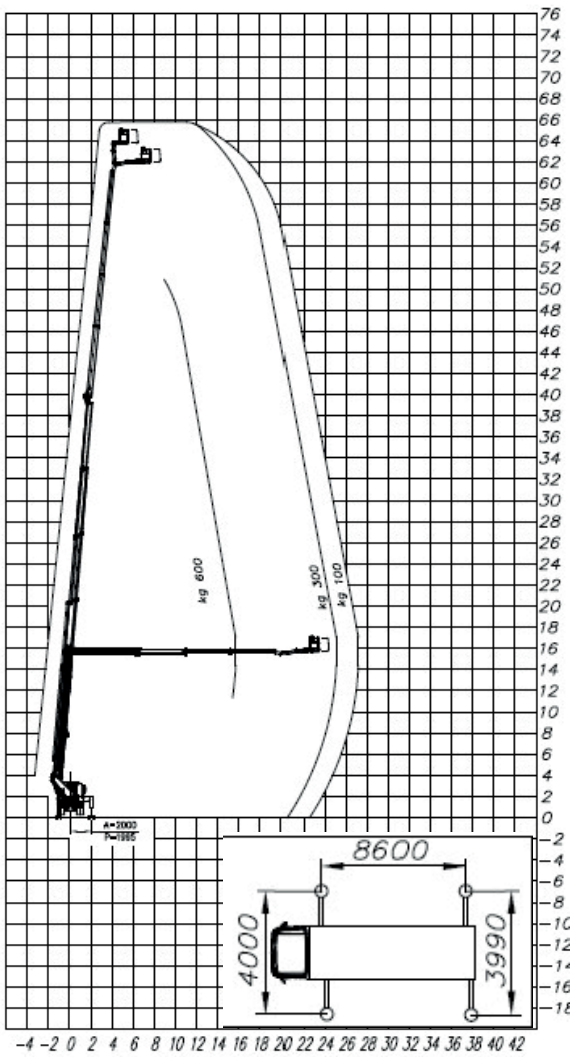
900/1500 kg





# AREA DI LAVORO TRAVI CON ESTENSIONE MINIMA

# AREA DI LAVORO VERRICELLO IDRAULICO 1500 KG MAX



12000

